



toscano

COLORIFICO DAL 1924

CITY Selection

100
TONALITÀ
DI TENDENZA
PER LA
DECORAZIONE
DI INTERNI

100
STYLISH
COLOURS
FOR
INTERIOR
DECORATION





05-CTY-09

12-CTY-09

19-CTY-09



06-CTY-09

13-CTY-09

20-CTY-09



07-CTY-09

14-CTY-09

21-CTY-09



08-CTY-09

15-CTY-09

22-CTY-09



09-CTY-09

16-CTY-09

23-CTY-09



01-CTY-09



03-CTY-09



10-CTY-09



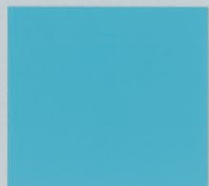
17-CTY-09



24-CTY-09



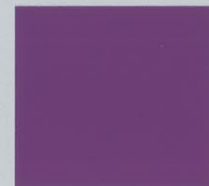
02-CTY-09



04-CTY-09



11-CTY-09



18-CTY-09



25-CTY-09



26-CTY-09



31-CTY-09



36-CTY-09



41-CTY-09



46-CTY-09



27-CTY-09



32-CTY-09



37-CTY-09



42-CTY-09



47-CTY-09



28-CTY-09



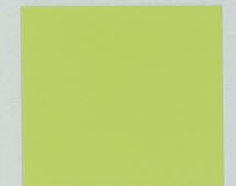
33-CTY-09



38-CTY-09



43-CTY-09



48-CTY-09



29-CTY-09



34-CTY-09



39-CTY-09



44-CTY-09



49-CTY-09



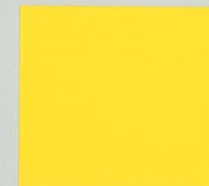
30-CTY-09



35-CTY-09



40-CTY-09

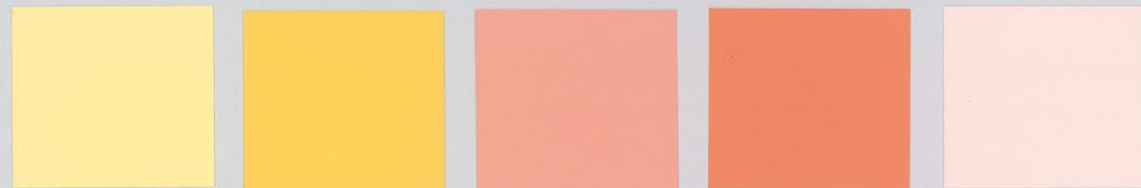


45-CTY-09

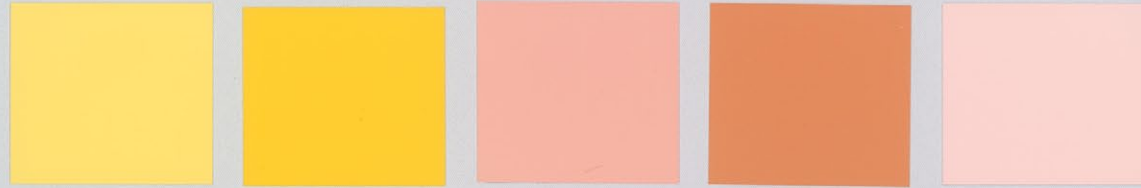


50-CTY-09

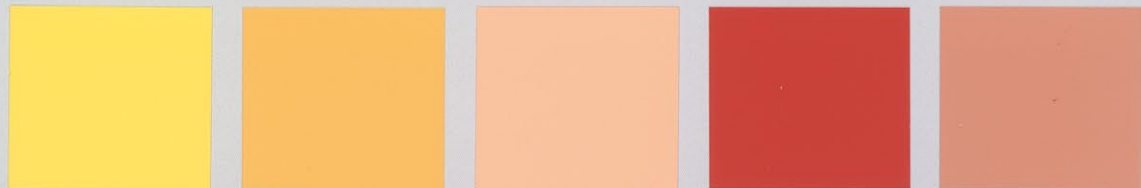
I colori presentati in questa cartella sono indicativi e possono subire col tempo leggere alterazioni dovute alla luce ed all'invecchiamento. I colori presentati in questa cartella possono essere realizzati con CITY idropittura lavabile a finitura vellutata per interni ed esterni, utilizzando il Sistema tintometrico Tonatone Progress.



51-CTY-09 56-CTY-09 61-CTY-09 66-CTY-09 71-CTY-09



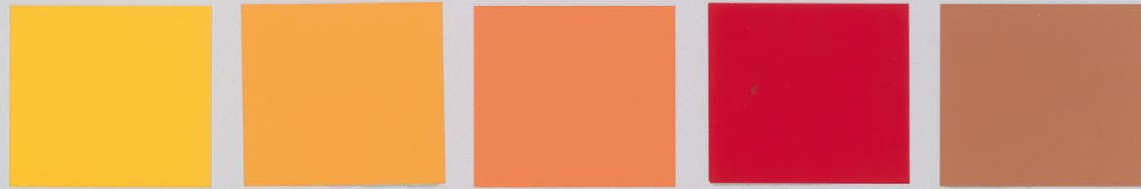
52-CTY-09 57-CTY-09 62-CTY-09 67-CTY-09 72-CTY-09



53-CTY-09 58-CTY-09 63-CTY-09 68-CTY-09 73-CTY-09



54-CTY-09 59-CTY-09 64-CTY-09 69-CTY-09 74-CTY-09



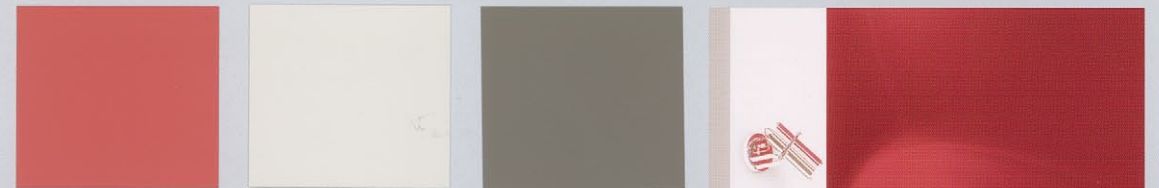
55-CTY-09 60-CTY-09 65-CTY-09 70-CTY-09 75-CTY-09



76-CTY-09 83-CTY-09 90-CTY-09 97-CTY-09 99-CTY-09



77-CTY-09 84-CTY-09 91-CTY-09 98-CTY-09 100-CTY-09



78-CTY-09 85-CTY-09 92-CTY-09



79-CTY-09 86-CTY-09 93-CTY-09



80-CTY-09 87-CTY-09 94-CTY-09



81-CTY-09 88-CTY-09 95-CTY-09



82-CTY-09 89-CTY-09 96-CTY-09



The colours in this brochure are indicative only and may alter over time with exposure to light and with ageing.
The colours in this brochure can be created with CITY water-based, washable, velvet finish paint for interiors and exteriors, using the Tonatone Progress colorimetric system.